

Second: 1764 Bonus:
First: 1430 Basement: 1079
Total: 3194 Attic: 543

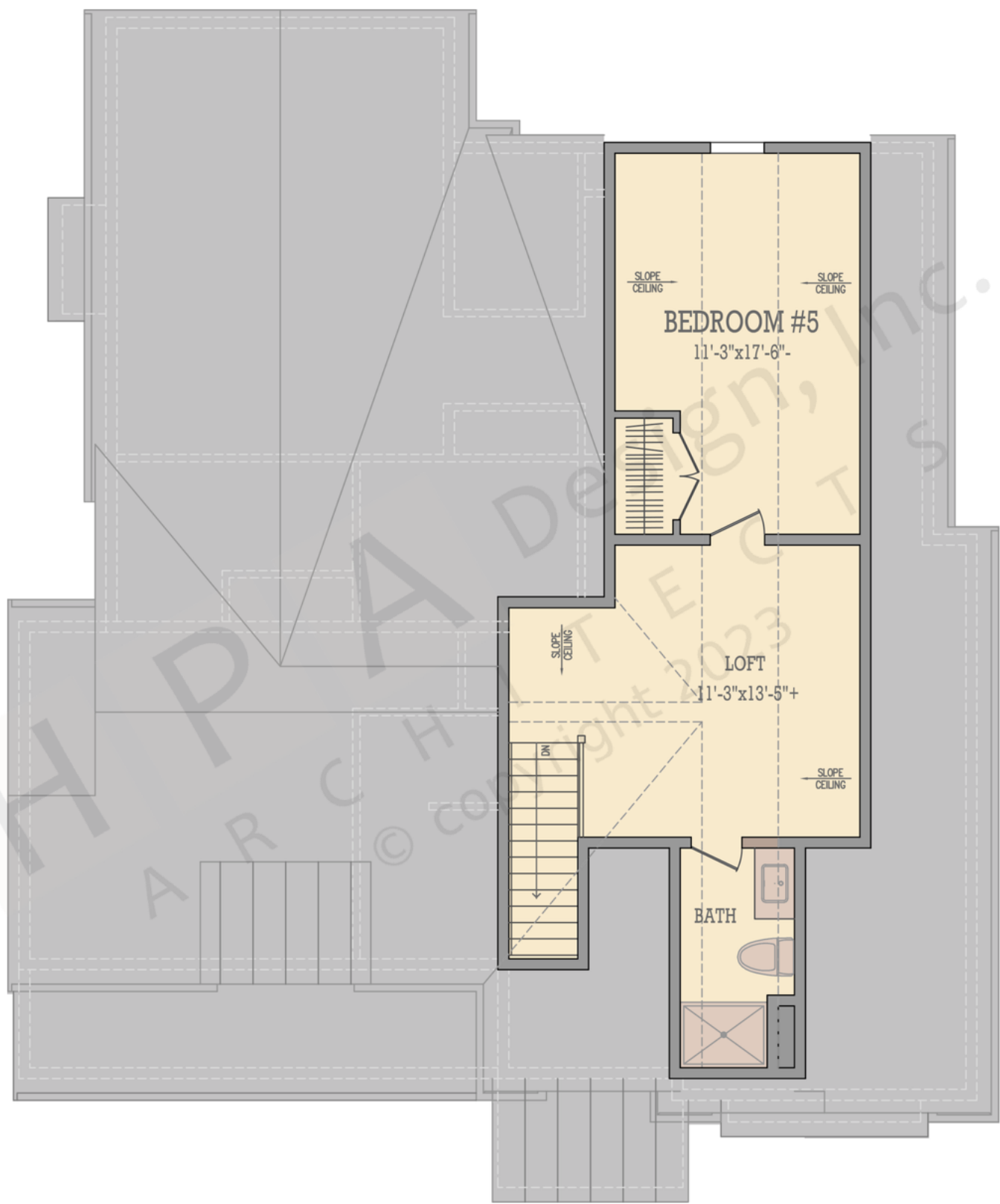




The square footage indicated is living space calculated from the exterior face of the wall stud. It does not include decks, porches, garages, volumes, uninhabitable & unconditioned spaces. All dimensions and square footages are approximate and subject to change without notice. HPA Design, Inc. assumes no responsibility for technical, typographical and other inaccuracies for errors. © copyright 2022 HPA Design, inc.



The square footage indicated is living space calculated from the exterior face of the wall stud. It does not include decks, porches, garages, volumes, uninhabitable & unconditioned spaces. All dimensions and square footages are approximate and subject to change without notice. HPA Design, Inc. assumes no responsibility for technical, typographical and other inaccuracies for errors. © copyright 2022 HPA Design, inc.



The square footage indicated is living space calculated from the exterior face of the wall stud. It does not include decks, porches, garages, volumes, uninhabitable & unconditioned spaces. All dimensions and square footages are approximate and subject to change without notice. HPA Design, Inc. assumes no responsibility for technical, typographical and other inaccuracies for errors. © copyright 2022 HPA Design, inc.



The square footage indicated is living space calculated from the exterior face of the wall stud. It does not include decks, porches, garages, volumes, uninhabitable & unconditioned spaces. All dimensions and square footages are approximate and subject to change without notice. HPA Design, Inc. assumes no responsibility for technical, typographical and other inaccuracies for errors. © copyright 2022 HPA Design, inc.