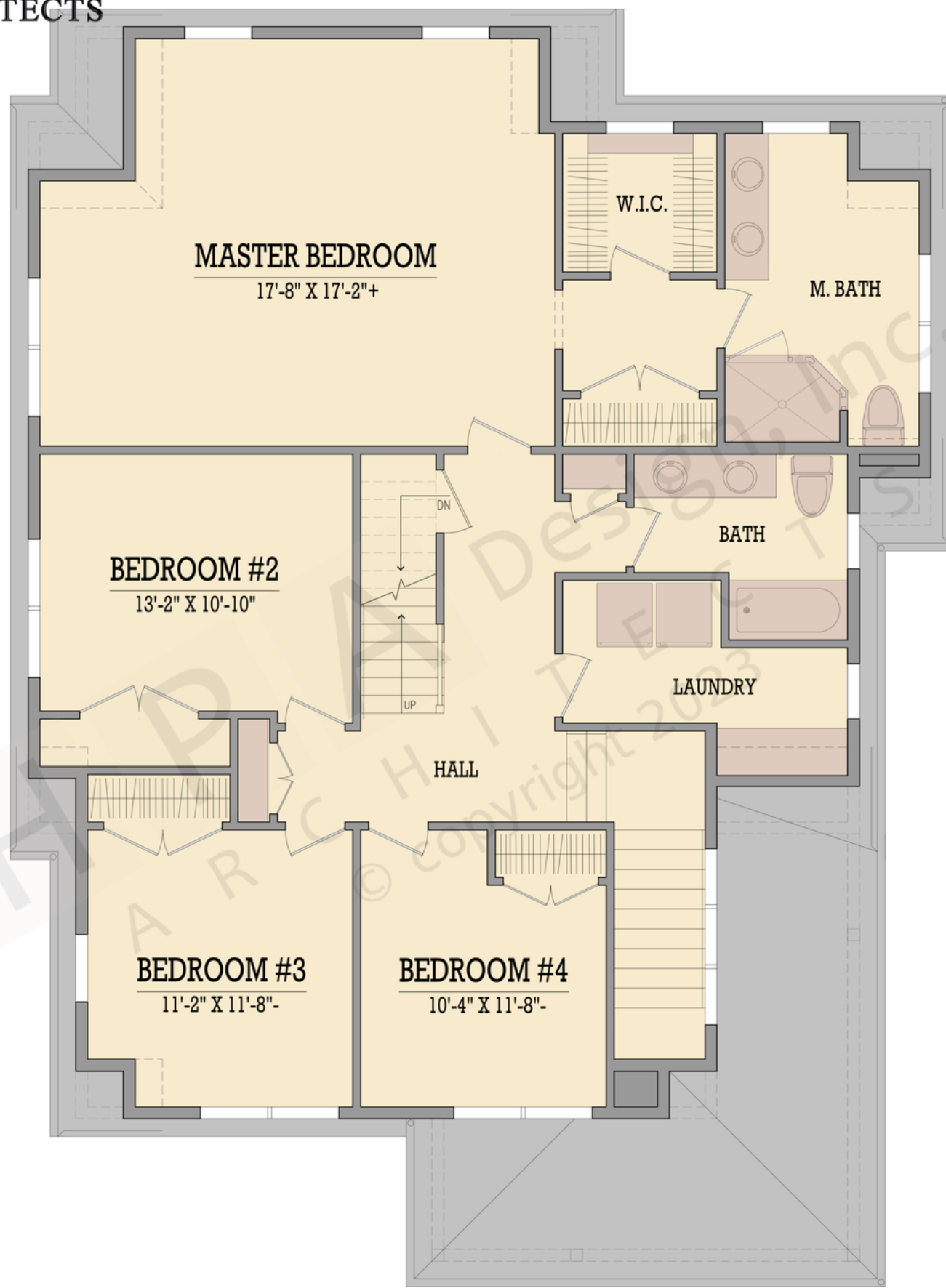


The square footage indicated is living space calculated from the exterior face of the wall stud. It does not include decks, porches, garages, volumes, uninhabitable & unconditioned spaces. All dimensions and square footages are approximate and subject to change without notice. HPA Design, Inc. assumes no responsibility for technical, typographical and other inaccuracies for errors. © copyright 2022 HPA Design, inc.



MASTER BEDROOM
 17'-8" X 17'-2"+

BEDROOM #2
 13'-2" X 10'-10"

BEDROOM #3
 11'-2" X 11'-8"-

BEDROOM #4
 10'-4" X 11'-8"-

W.I.C.

M. BATH

BATH

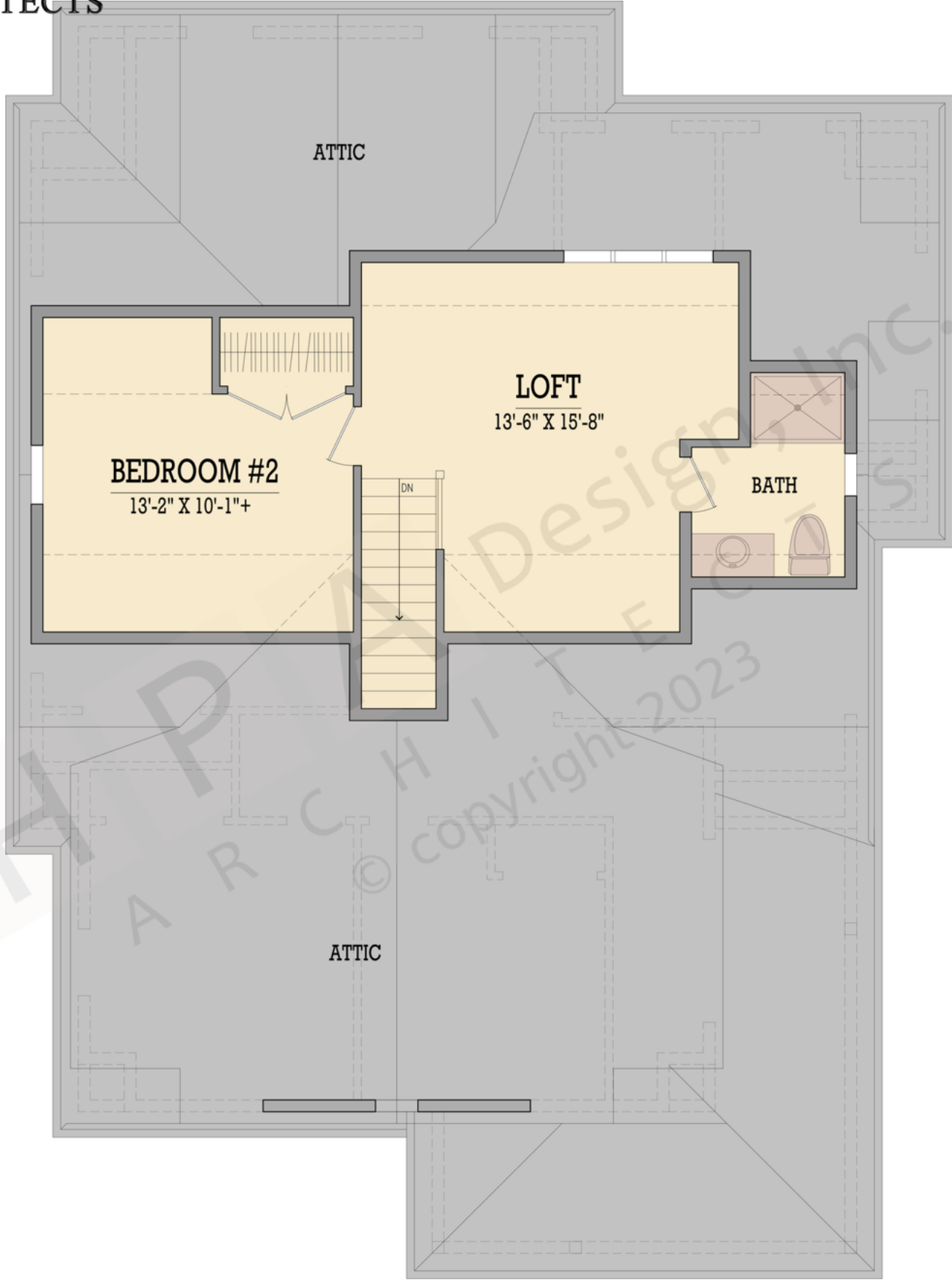
LAUNDRY

HALL

DN

UP

The square footage indicated is living space calculated from the exterior face of the wall stud. It does not include decks, porches, garages, volumes, uninhabitable & unconditioned spaces. All dimensions and square footages are approximate and subject to change without notice. HPA Design, Inc. assumes no responsibility for technical, typographical and other inaccuracies for errors. © copyright 2022 HPA Design, inc.



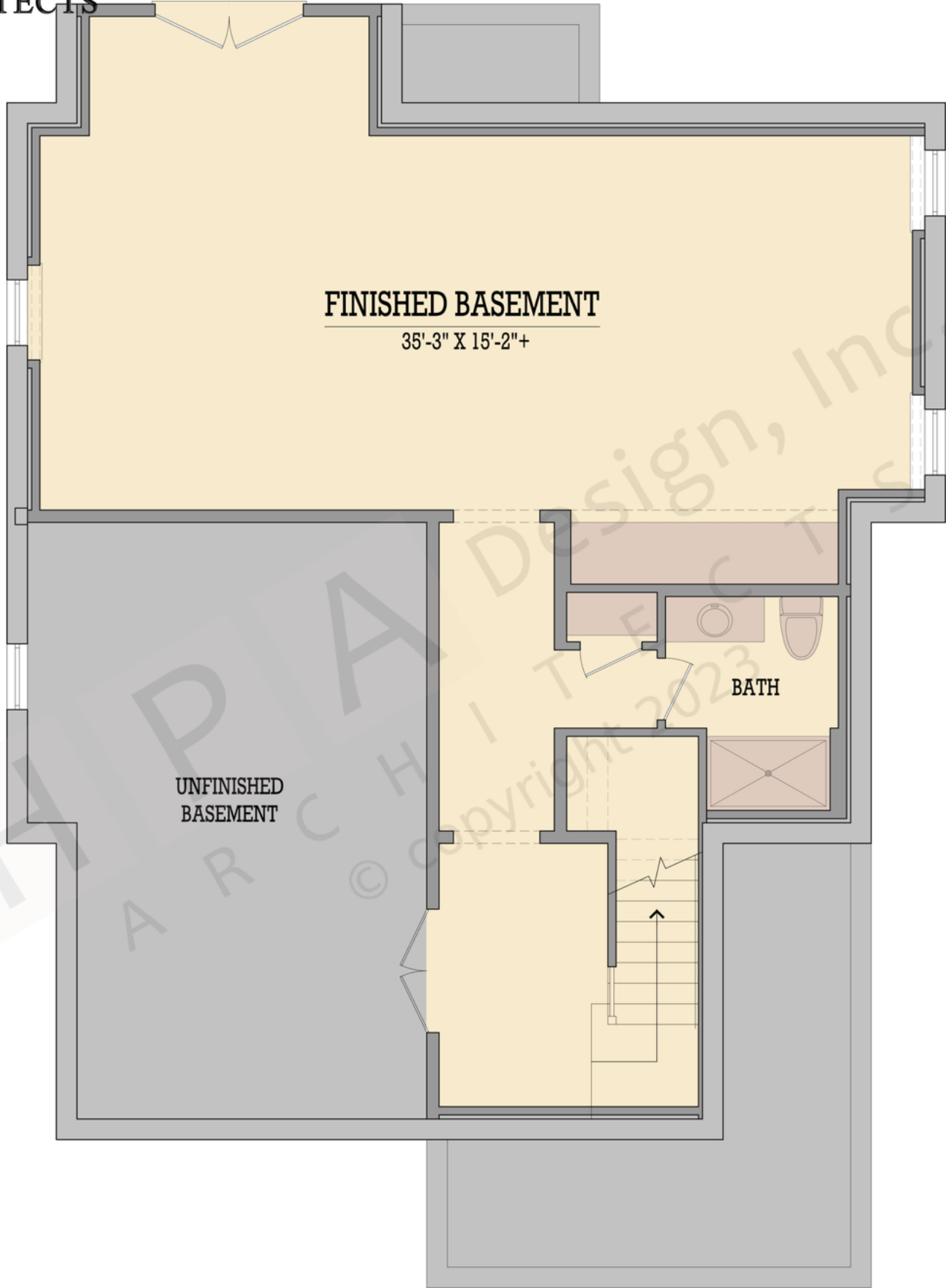
The square footage indicated is living space calculated from the exterior face of the wall stud. It does not include decks, porches, garages, volumes, uninhabitable & unconditioned spaces. All dimensions and square footages are approximate and subject to change without notice. HPA Design, Inc. assumes no responsibility for technical, typographical and other inaccuracies for errors. © copyright 2022 HPA Design, inc.



Design, Inc.
ARCHITECTS

Plan# 4615

First: 1481 Bonus:
Second: 1452 Basement: 876
Total: 2933 Attic: 528



FINISHED BASEMENT
35'-3" X 15'-2"+

UNFINISHED
BASEMENT

BATH