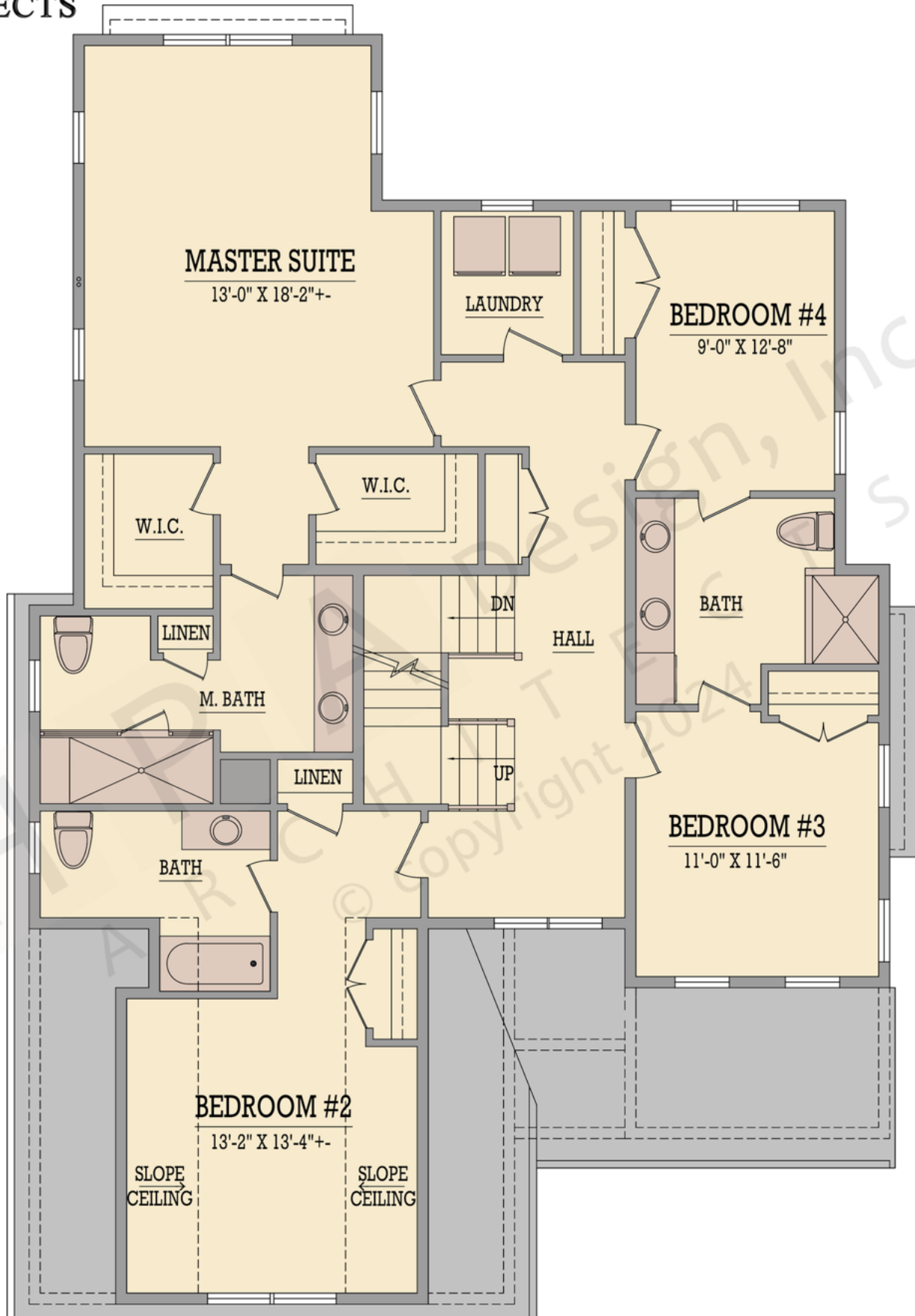


The square footage indicated is living space calculated from the exterior face of the wall stud. It does not include decks, porches, garages, volumes, uninhabitable & unconditioned spaces. All dimensions and square footages are approximate and subject to change without notice. HPA Design, Inc. assumes no responsibility for technical, typographical and other inaccuracies for errors. © copyright 2024 HPA Design, inc.



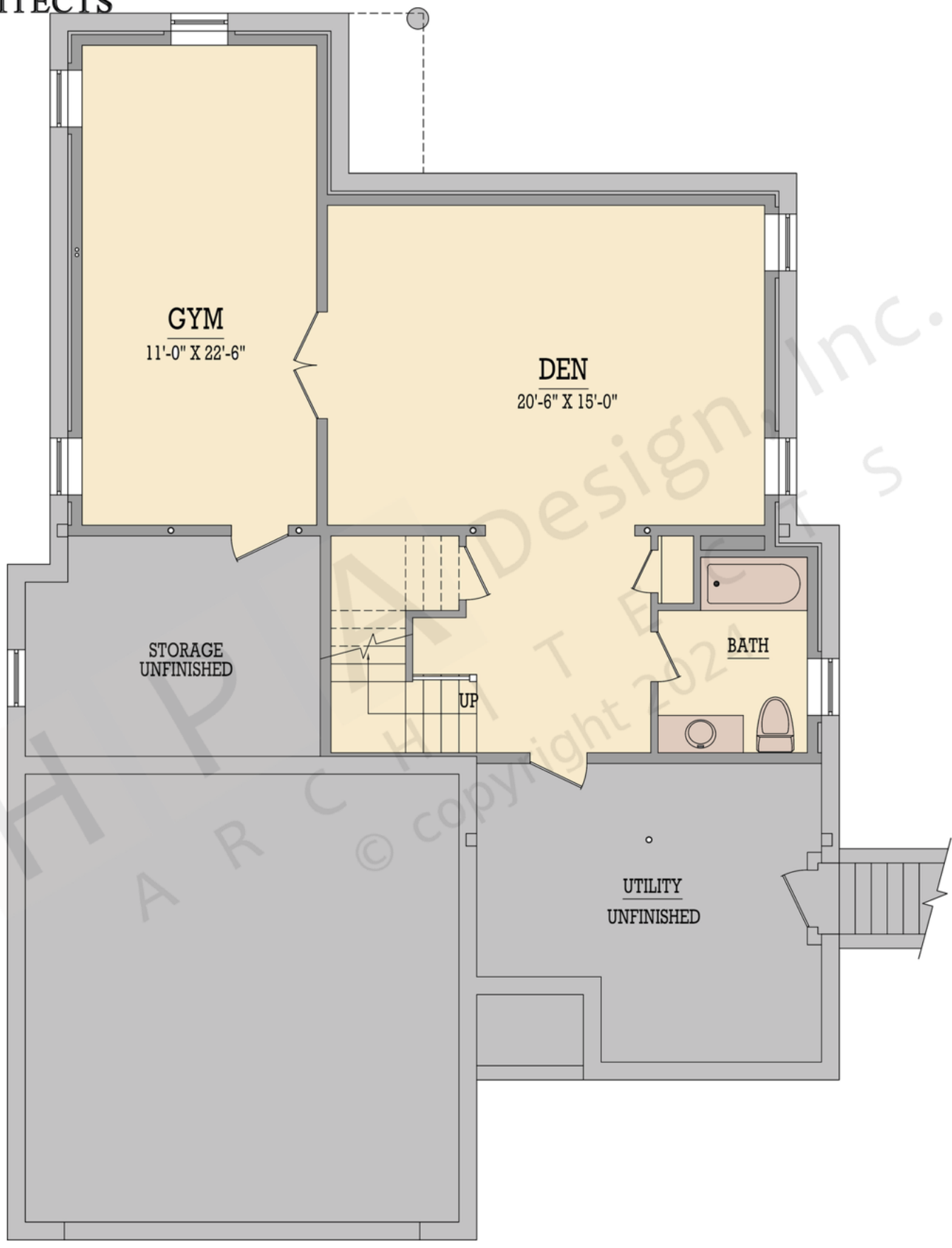
The square footage indicated is living space calculated from the exterior face of the wall stud. It does not include decks, porches, garages, volumes, uninhabitable & unconditioned spaces. All dimensions and square footages are approximate and subject to change without notice. HPA Design, Inc. assumes no responsibility for technical, typographical and other inaccuracies for errors. © copyright 2024 HPA Design, inc.



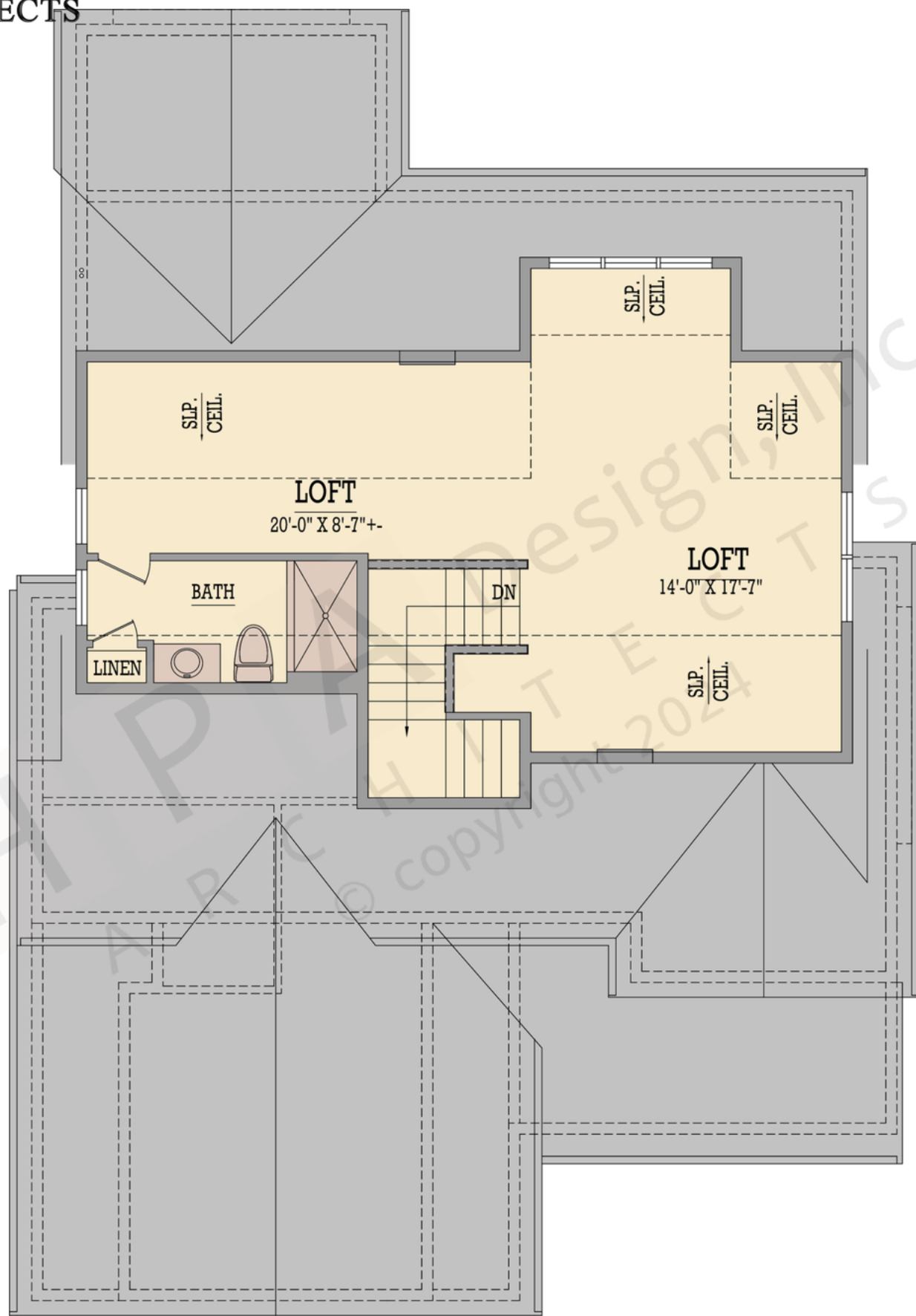
Design, Inc.  
ARCHITECTS

Plan# 4745

First: 1356 Bonus:  
Second: 1591 Basement: 879  
Total: 2947 Attic: 669



The square footage indicated is living space calculated from the exterior face of the wall stud. It does not include decks, porches, garages, volumes, uninhabitable & unconditioned spaces. All dimensions and square footages are approximate and subject to change without notice. HPA Design, Inc. assumes no responsibility for technical, typographical and other inaccuracies for errors. © copyright 2024 HPA Design, inc.



The square footage indicated is living space calculated from the exterior face of the wall stud. It does not include decks, porches, garages, volumes, uninhabitable & unconditioned spaces. All dimensions and square footages are approximate and subject to change without notice. HPA Design, Inc. assumes no responsibility for technical, typographical and other inaccuracies for errors. © copyright 2024 HPA Design, inc.